



FC-500VC / 700VC

Flatbed Cutting Plotter

THE BEST IN DIGITAL FINISHING

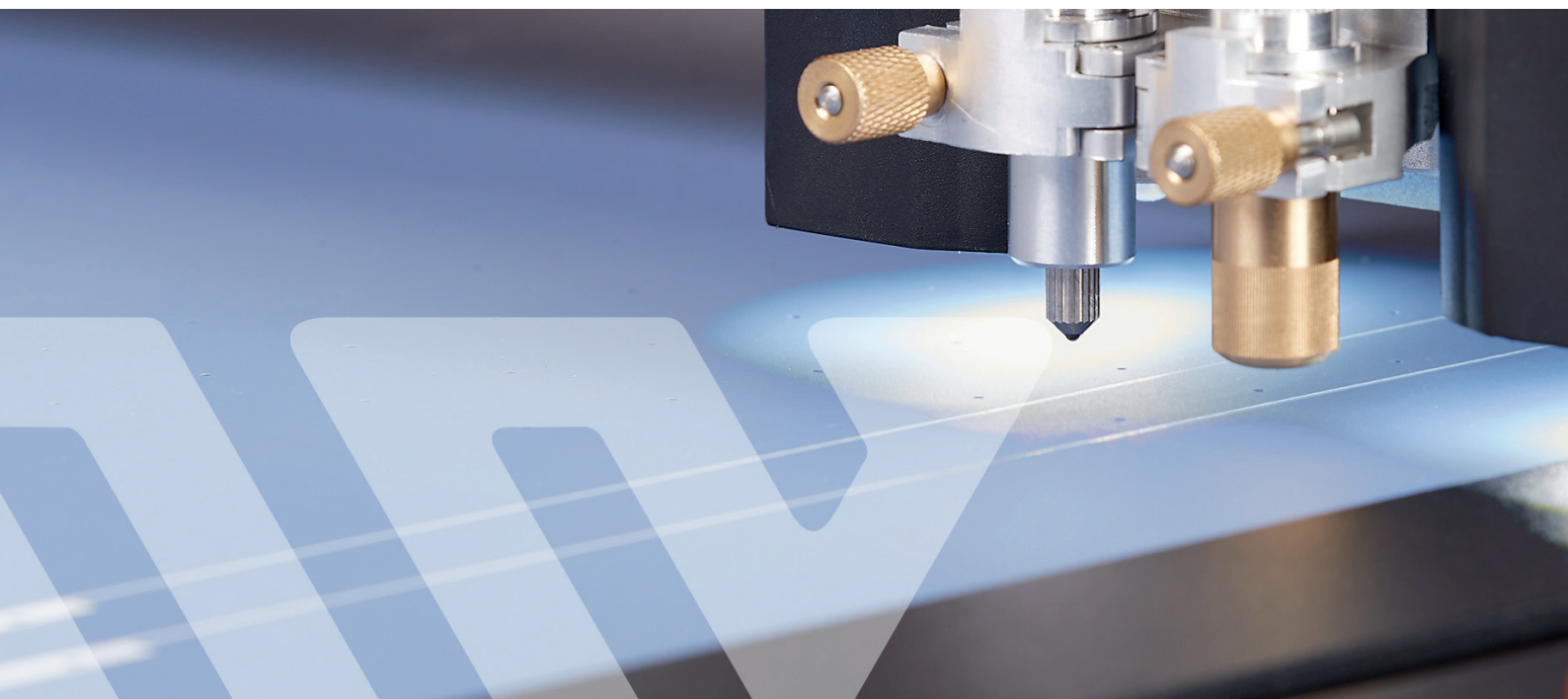
With the advancement of digital finishing technology the possibilities are growing, and especially now, in difficult economic times, Vulcan's Digital Finishing products offer you undreamt-of possibilities for your customers.

Cutting labels or stickers in any shape simply and quickly? No problem! Completely independent of design, the most diverse shapes can be cut. Product labelling, warning signs, type plates etc.? You don't need a cutting die and can also process very short runs quickly. Precise contour cutting, grooving or creating folding edges created by the

Vulcan flatbed cutting plotter flawless. The floor-mounted unit is ideally suited for the production of small and medium series as well as design samples. This means that even with the number of pieces one, economic work can be done.

From your own design to the finished product – when I need something, the customer can always decide for himself with the help of our products.

Connect the machine, set it up and get started. This is only possible with Vulcan.



The Vulcan FC-500VC/700VC flatbed cutting plotter is ideal for light to medium production and design samples. Ideally suited for packaging boxes, tags, cards and labels. Camera system, User friendly touch screen, Advanced contour cutting, Network interface, U-Disk function and QRcode system, make the FC-500VC special. Perforation cut, Die cut, Kiss cut and Creasing.

MAKE YOUR IDEAS COME TRUE



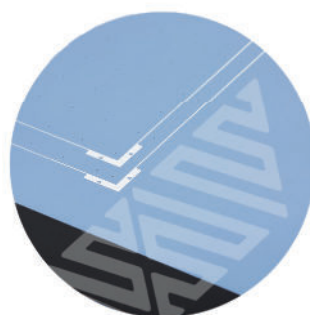
CAMERA SYSTEM

The FC-500VC/700VC has a high resolution camera that can actually see registration marks, even on colored and transparent materials, or if the registration marks themselves are white or light colored. Fast scanning speed, SRA3 size, less than 3 seconds. 5mm registration marks will save paper/money.



FRIENDLY TOUCH SCREEN PANEL

Vacuum (on/off), friendly for holding papers down (ON) and replacing papers (OFF). Move to origin, move carriage back to origin by one press, save time and exactly accurate position. Recut, it's perfect for repeating same jobs X1/X10, to move carriage by two different speeds.



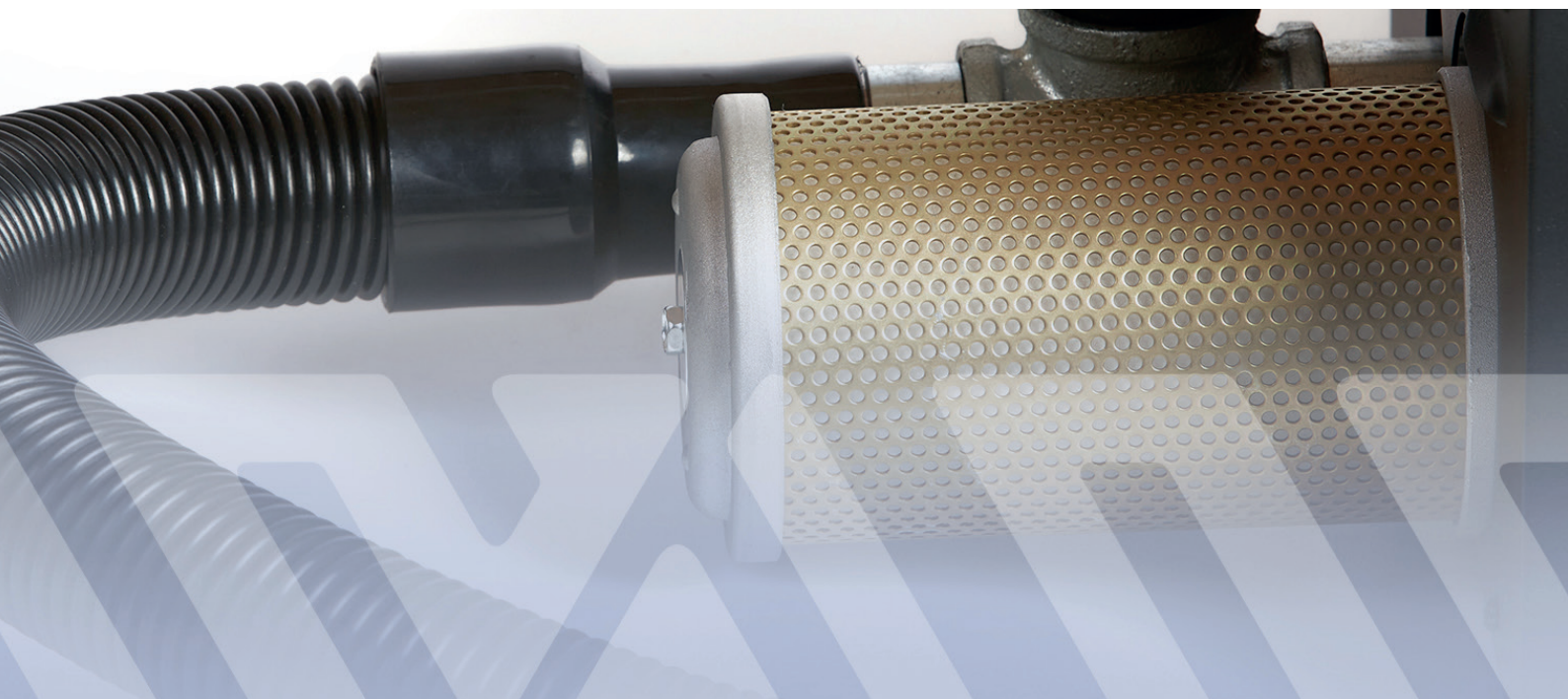
ADVANCED FEATURE FOR CONTOUR CUTTING

The Vulcan FC-500VC/700VC has an advanced feature to compensate for print skew or positioning skew - effectively redrawing the artwork according to the error. Performs adjustments of size, tilt and warp for contour cutting by scanning 4 marks, it can be more precise than other methods.



USB FLASH MEMORY

Save PLT files to USB flash memory, the PLT files can be output directly to the flatbed cutting plotter by plug-in, means users to operate FC-500VC without a computer, great for batch production. 32M memory on motherboard, ensure to read and load the PLT files from USB flash memory quickly.



The Vulcan FC-500VC/700VC Flatbed Cutting Plotter – an absolutely fantastic device. Here you experience shapely design and precise operation in perfect combination.

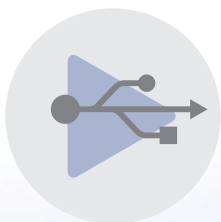


SPECIFICATIONS



CUTTING & CREASING

Two tools are available for cutting and creasing, i. e. adding folding edges to the object within the same operation.



U-DISK FUNCTION

PLT-files saved on USB thumb drives (U-disk) can be used for direct output. This means that the FC-500VC can be used without being connected to a computer.



QR CODE SYSTEM

FC-500VC/700VC reads QR-codes on the printed media, allowing automatic matching of print and cut files.



NETWORK INTERFACE

A, Stable communications over long distances
B, Control one flatbed cutting plotter from multiple computers
C, Control different flatbed cutting plotters from one computer

TECHNICAL DATA FC-500VC / 700VC

Configuration	Digital servo system, Flatbed
Media hold-down method	Vacuum suction
Maximum cutting speed	700 mm/s (10 to 700 mm/s)
Cutting pressure	Tool1: Max.5.88N(600 gf) Tool 2: Max. 5.88 N (600 gf)
Effective cutting area	495x685mm / 790x1085mm
Mountable media (Y-axis direction)	640mm
Minimum character size	5 mm square
Mechanical resolution	0.005 mm (5µm)
Programmable resolution	HP-GL: 0.025 mm
Repeatability	0.1mm
Standard interfaces	USB2.0 (Full Speed) / U-Disk / Ethernet
Memory	32MB
Command sets	HP-GL
Number of tools	2 tools
Tool types	Cutter blade / Pen / Creasing/Etching tool
Operating screen	4.3-inch touch LCD
Power supply	100 to 240 V AC, 50/60 Hz (Auto switching)
Power consumption	Max. 150VA (machine), Max.550W (vacuum pump)
Operating environment	Temperature: 10 to 35 degrees C (35 to 95 degrees F)
Humidity	35 to 75% RH (non-condensing)
External dimensions	981(Y)x977(X)x1047(H)mm / 1420(Y)x1212(X)x1050(H)mm
Packaging dimensions	115X110X61CM (machine) 47.5X43X37CM (vacuum pump) / 168x153x61cm (machine) 78x67x72CM (vacuum pump)
G.W. / N.W.	77kg / 150kg (machine) 20kg / 23kg (vacuum pump)
Compatible OS	Windows and Mac



NEPATA VERTRIEB GMBH
Hochstatt 6 - 8
85283 Wolnzach
Germany

CONTACT US
+49 8442 95840-0
www.vulcantecpro.eu
info@vulcantecpro.eu